



Oedema in advanced ill health

Information for healthcare professionals

Introduction

This fact sheet has been produced as a resource for healthcare professionals and aims to help determine the best possible approach to managing oedema in advanced ill health. The information has been written with particular thought for people with advanced cancer in whom oedema is a common problem. However, the principles can also be applied to people with other advanced illness. It should be shared with the medical team caring for the patient as they may wish to discuss other treatment approaches specific to the particular illness.

Oedema can be one of the most distressing symptoms affecting patients with advanced ill health. Although most commonly occurring in the limbs, it can also affect the trunk, genitalia, head and neck. It may lead to immobility, pain and discomfort, loss of function, leakage of fluid from affected areas, cellulitis, altered body image, sexual difficulties, anxiety and depression.

Trying to accurately determine the underlying cause will ensure optimal success, but acknowledging the impact of oedema on the patient is paramount to help identify the best approach in managing the condition and its associated features.

Establish the patient's priorities

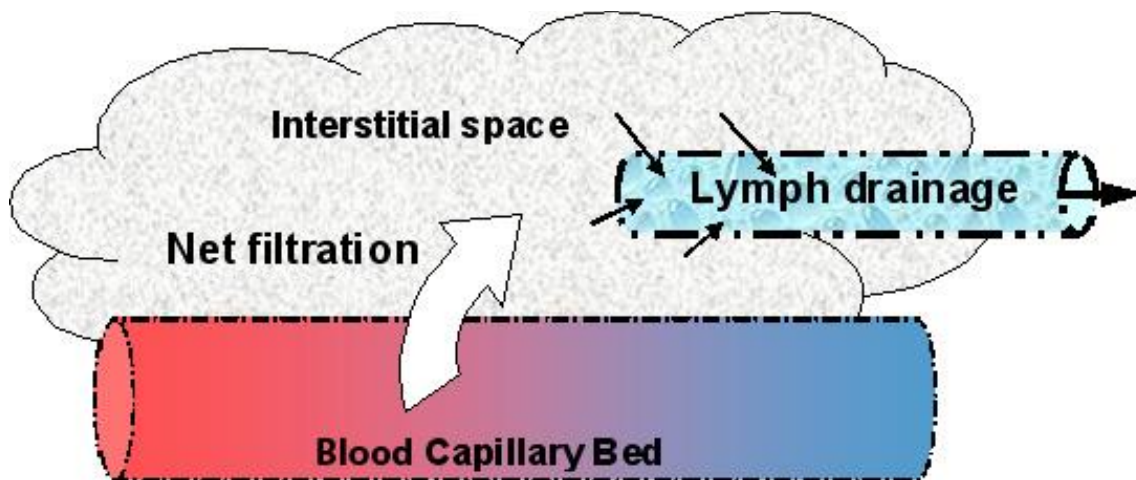
- How much of a priority is the oedema, in the context of what is happening to the patient?
- Consider the likely causes.
- What are their other priorities?
- Is it likely to become more of a problem over time, such that effective management now may help to prevent worsening?

- Where is the patient in the context of the underlying illness? e.g. How advanced is it and are there further disease modifying treatments possible and acceptable to the patient?)
- How you assess and manage the patient will depend very much on what the patient feels is important and their ability to cope with the treatment process. Even with an advanced illness, optimal management of oedema may still be appropriate.

CAUSES OF OEDEMA

Under normal physiological conditions, there is a net filtration of fluid out of the blood capillaries into tissues.

Oedema is the accumulation of excess fluid in the interstitial space of the tissues and occurs whenever the fluid filtration rate exceeds lymphatic drainage.



In advanced ill health there may be multiple factors causing increased capillary filtration and impaired lymphatic drainage.

Factors affecting net capillary filtration

- Increased Venous Pressure
 - Right Heart Failure
 - Venous occlusion or compression
 - Salt/water retention
 - Chronic Venous stasis/dependency syndrome
- Inflammation
 - Infection (cellulitis)
 - Tissue injury/tumour infiltration
 - Dermatitis e.g. rosacea and non-infective forms of inflammation e.g. granulomatous disease (Crohn's)

- Reduced plasma colloid osmotic pressure
Hypoalbuminaemia

Factors affecting lymphatic drainage

- Damage or blockage to lymphatics
Surgery, radiotherapy, tumour
- Reduced function of lymphatics
Congenital/genetic lymphatic anomalies
Immobility/reduced muscle pump
Overload and exhaustion of lymphatics from sustained high microvascular fluid filtration
 - Obesity

Identifying the factors involved is important when tailoring the approach to management.

ASSESSMENT

Features of oedema

Assessment of oedema should include a thorough medical history (including development of oedema) and examination including:

- Speed of onset and duration
- Appearance of the skin (colour, temperature, integrity)
- Distribution/extent of oedema. (Including head and neck, truncal, genital oedema)
- Palpation of tissues including pitting
- Associated symptoms (pain, sensory changes, breathlessness)
- Medication (side effects)
- Additional complications (e.g. fungating lesions, lymphorrhoea, brachial plexopathy)

Some features indicate the need for urgent investigation or treatment

Sudden onset or worsening of oedema – consider:

- **Superior Vena Cava Obstruction (SVCO)**
(Bilateral arm oedema, facial oedema, headache, breathlessness, distended veins over neck/chest)
- **Inferior Vena Cava Obstruction (IVCO)**
(Bilateral leg oedema with truncal/genital oedema, distended veins over abdomen)
- **Venous Thrombosis** (Upper or lower limb. Especially if unilateral. May be painful or tender, dusky colour, distended veins)

- **Heart Failure** (Very soft pitting, breathlessness lying flat)
- **Cellulitis** (Erythema may be diffuse, increased skin temperature, may have pain and may be systemically unwell)

Other features

- **Chronic vena cava obstruction/compression.** The onset of oedema may be more gradual, but with collateral circulation, distended veins may be more prominent.
- **Presence of Lymph nodes.** Consider recurrent cancer or infection.
- **Venous incompetence.** In chronic oedema of venous origin, the distal limb often has a dusky hue and distended varicose veins which resolve on elevation. Thread veins may occur particularly around the ankle.
- **Dependency/gravitational oedema.** This tends to start as soft pitting oedema of the lower legs, often associated with reduced mobility.
- **Local malignancy.** This may present as demarcated lesions in the skin with raised edges or satellite lesions. These may advance rapidly and may ulcerate.

Further investigations

- **Ultra sound/CT scan:** Indications: – if DVT suspected, or progressing lymphadenopathy, or hepatomegaly leading to venous or lymphatic obstruction.
- **Bloods:** FBC, U&Es (renal impairment), Albumin, D-dimers (don't be misled: False positives are common, false negatives can occur).
- **ECG/Echo/BNP:** If heart failure is suspected.

MANAGEMENT OF OEDEMA

1) Emergency situations

The initial focus of treatment is on addressing emergency or potentially urgent situations. Immediate liaison with medical colleagues is usually required e.g.

- SVCO (and to lesser extent IVCO) – high-dose corticosteroids (e.g. dexamethasone 16mg daily); radiotherapy, chemotherapy and surgical insertion of stent may also be considered.
- Deep vein thrombosis – (refer to DVT clinic) anticoagulation appropriate where potential benefits outweigh contra-indications or cautions (needs careful consideration in patients with advanced cancer).
- Cellulitis – prompt treatment with antibiotics (e.g. Oral amoxicillin 500mg 8-hourly; Erythromycin 500mg 6-hourly for patients who are allergic to penicillin. Where there is poor response to oral amoxicillin or erythromycin after 48 hours, replace with Clindamycin 300mg 6-hourly). Antibiotic prophylaxis should be considered in patients who have 2 or more episodes of

cellulitis in one year. (For more information see the Cellulitis Consensus Document on the use of antibiotics in lymphoedema on the LSN website www.lymphoedema.org or on the British Lymphology Society website www.thebls.com.)

2) Reverse the reversible

The next priority is to consider any non-urgent factors which are potentially reversible. The focus is on the patient's own priorities and on ensuring that the benefits of treatment are not outweighed by the burdens e.g.

- Advancing cancer/recurrent malignancy – referral for palliative anticancer treatment where appropriate e.g. radiotherapy, chemotherapy or hormone treatment. If tumour is compressing or blocking lymphatic/venous drainage, consider dexamethasone (6-12mg daily PO for a 5-7 day trial titrating down after an initial response or stopping if no response).
- Anaemia – in anaemia of chronic disease consider treatment by blood transfusion or in cases of iron deficiency anaemia consider oral iron therapy, though latter may take weeks to establish effect.
- Fluid-retaining drugs (e.g. NSAIDs & corticosteroids) exacerbate oedema – consider discontinuing. (Other drugs that may cause fluid retention include calcium channel antagonists and gabapentin/pregabalin.)
- Heart failure – may respond to conventional treatment (e.g. diuretics, ACE-inhibitors).
- Malignant ascites – reduction of ascites (e.g. through anticancer therapy, paracentesis, diuretic therapy or peritoneovenous shunt) may improve associated oedema.

3) Tailor treatment options

The focus of management is on skin care, limb positioning and support, exercise, lymphatic drainage and containment. The Lymphoedema Support Network has produced a number of other useful fact sheets on these areas which, whilst targeted at lymphoedema, are equally applicable to other forms of oedema. Skin care and limb positioning can be undertaken in all cases, whilst the introduction of the other components of care needs to be considered in the context of the patient's condition and the underlying causes of the patient's oedema.

Skin care

Effective skin care in the form of daily moisturising and careful attention to hygiene optimises skin condition and minimises the risk of skin problems which can lead to infection/cellulitis.

Limb positioning and support

Elevation of the affected limb, where possible to just above the level of the heart, reduces oedema by promoting venous return and lowers lymph load. Appropriate positioning and support of a swollen limb (e.g. by using pillows when the patient is lying in bed) can improve comfort in a very ill person.

Exercise, movement and function

Exercise stimulates lymphatic and venous drainage, and promotes mobility and function in the affected limb. The focus is on tailoring exercise and movement to the patient's needs, ability, general health and disease status. The site of the swelling should be considered, together with the underlying cause of the oedema (particularly in the case of obstructive oedema, where specialist advice on appropriate exercise should be sought). Where a person is unable to actively move a limb, passive movements can also be helpful.

Lymphatic drainage

Lymphatic drainage, or massage, assists in managing oedema and providing comfort by promoting lymph flow from congested areas and protein removal from the tissues. There are two main recognised forms of massage in oedema management, both incorporating deep breathing techniques:

Manual Lymphatic Drainage (MLD) is a gentle, but highly specialised technique, undertaken by trained and accredited practitioners.

Simple Lymphatic Drainage (SLD) is a simplified version of MLD that patients, relatives/carers and healthcare professionals can be taught by a trained therapist.

Containment

Containment, through the use of bandaging, compression hosiery or adjustable Velcro[®] compression devices, plays an important role in reducing and controlling swelling: external support, particularly when combined with muscular activity, stimulates lymphatic and venous drainage and will also often bring comfort to a swollen limb. It may not always be appropriate in advanced disease (particularly if there is severe hypoalbuminaemia, as fluid shifts proximally may occur) or if there is arterial insufficiency or uncontrolled heart failure. They should be measured and fitted following assessment by an appropriately trained professional, as inappropriate or ill-fitting compression may lead to a deterioration of the oedema and skin condition.

Lymphoedema management

Where true 'lymphoedema' is identified (with evidence of firm, thickened or fibrotic tissues), refer to a specialist service for further assessment of the patient's lymphoedema and review of appropriate management options. These are determined by the site, stage, severity and complexity of the swelling, and require the input of a trained practitioner.

4) Additional treatments

- **Intermittent pneumatic compression pumps**

Pneumatic compression pumps can have a role in managing oedema in advanced disease. They should only be used by an appropriately trained healthcare professional.

- **Diuretics**
Have no effect in uncomplicated lymphoedema, however, can be considered if there is midline, genital or head and neck oedema, if there are signs of associated CCF, IVCO, hypoproteinaemia or associated ascites of central origin. Consider Spironolactone 100 – 200mg/day (+/- Furosemide), dependent on kidney function.
- **Kineseo taping**
Kineseo tape can alleviate pain and facilitate lymphatic drainage by lifting the skin. It is particularly beneficial in the reduction of trunk, head and neck lymphoedema where compression hosiery or bandaging is difficult or not appropriate. Kineseo tape should only be applied by professionals with the appropriate level of training.

5) Communication/Emotional support

It is important to recognise and acknowledge the distress and concerns that oedema can cause.

It can often serve as a very visible reminder of the illness that a person is facing. It may be the focus of someone's anxiety or depression.

Explanation of underlying causes and treatment options may help to reduce anxiety and develop shared realistic goals.

- Give opportunity to **discuss areas of concern**
- Enquire specifically about the impact of the oedema, **physically and emotionally**
- **Explore understanding** of life-threatening nature of their condition
- **Acknowledge uncertainties** and **give options** where possible
- **Denial** may be an effective coping strategy for many people. It may even appear that they haven't been told or heard what has been said. Seek their views (verbal and non-verbal clues!) e.g. "Are you the sort of person who likes to know what is going on?"
- Involve other members of the multi-professional team where appropriate e.g. Specialist Palliative Care Services / Macmillan Nurses, Physiotherapists, Occupational Therapists, Social workers, Chaplains, Psychologists

Contributors

Dr Andrew Hughes, Consultant in Palliative Medicine, St Oswald's Hospice, Newcastle. 1, 2

Kathryn Clark, Day Services Manager, Lymphoedema Specialist, St Oswald's Hospice, Newcastle. 1

Fiona Thompson, Lymphoedema Specialist, St Oswald's Hospice, Newcastle. 1

Dr Vaughan Keeley, Consultant in Palliative Medicine, Derby Hospitals NHS Foundation Trust. 1

Denise Hardy, Clinical Nurse Specialist – Lymphoedema, Kendal Lymphology Centre, Cumbria.
LSN Nurse Advisor. 1,

Anne Farrar, Clinical Nurse Specialist (WCHH). 1

Andrea Stigant, Clinical Lymphoedema Specialist, NHS Cumbria (Carlisle and Eden). 1

Anita Hopkins, Macmillan Lead Lymphoedema Specialist, Gloucestershire. 1

Jill Lisle, Practice Development Lead, Lymphoedema Specialist, St Oswald's Hospice, Newcastle. 2

Andrew Stoddart, Lymphoedema Specialist, St Oswald's Hospice, Newcastle. 2

Professor Peter S. Mortimer, Consultant Dermatologist at the Royal Marsden and St George's
Hospitals, London. 1, 2

LSN Trustees. 1, 2

1 Member of original contributors' panel

2 Member of 01/2018 contributors' review panel

This information was revised in 01/2018. It will next be reviewed in 01/2020 or before, should the LSN become aware of significant changes in practice.

LSN

**THE LYMPHOEDEMA
SUPPORT NETWORK**

because lymphoedema matters

For Information and help, please contact

The Lymphoedema Support Network
St Luke's Crypt, Sydney Street, London SW3 6NH

Telephone: 020 7351 4480 (Information and Support)
020 7351 0990 (Administration)
Facsimile: 020 7349 9809
e-mail: admin@lsn.org.uk
Website: www.lymphoedema.org



Registered Charity No. 1018749

Patron: Zoë Wanamaker CBE
Honorary Patron: Dame Judi Dench, CH, DBE

THE LYMPHOEDEMA SUPPORT NETWORK

LSN 01/2018